



Office of the State Superintendent of Education (OSSE)—GD0, GO0, GN0, GC0

Jesus Aguirre, State Superintendent
810 1st St, NE
Washington, DC 20003
(202) 727-6436
<http://osse.dc.gov/>

Central Purpose

OSSE is the State Education Agency for the District of Columbia charged with raising the quality of education for all DC residents. OSSE serves as the District's liaison to the U.S. Department of Education and works closely with the District's traditional and public charter schools to achieve its key functions:

- Overseeing all federal education programs and related grants administered in the District of Columbia.
- Developing state-level standards aligned with school, college, and workforce readiness expectations. Administering assessments.
- Ensuring access to high-quality child care and universal pre-kindergarten for eligible District families.
- Providing resources and support to assist the District's most vulnerable student populations.
- Providing regional, door-to-door transportation to school for District children with special needs.
- Awarding higher education financial assistance to eligible District students at public and private colleges and universities in DC and across the country.
- Increasing health/physical education awareness as well as ensuring access to free meals year-round.
- Overseeing the DC State Athletic Association (DCSAA), which provides interscholastic athletic programming that enriches the education experiences of all student-athletes.
- Providing a one-stop source of statewide school data on each traditional and public charter school as well as resources to

support children from birth to post-secondary education.

OSSE is in the midst of a revision of our organizational structure as we align our efforts and ensure all divisions support our key functions. The revised structure will historic address programmatic mis-alignment, create sustainability in light of lost federal funds, establish a new systems of support and accountability, centralize key fiscal and grants management functions, and focus on reduction of administrative burden for our clients.

Key Facts

- Serves 63 local education agencies
- Provides transportation to 3163 students with special needs, including metro card users
- 400+ early learning providers licensed
- 60000+ students qualify for free and reduced lunch program
- Approximately 85,000 students enrolled in DC Public Schools and public charter schools
- 7871 meals served in the child and adult care food program

Goals/Performance Measures

- At least 75% of young children will be ready at the start of kindergarten.
- At least 75% of our students will be proficient in reading and math.
- At least 75% of all students will graduate ready for college and careers in four years.
- At least 50% of our young people will complete a post-secondary credential within six years of high school completion.
- Decrease by 20% the number of low income youth ages 16 to 24 who are not in school nor employed.
- At least 66% of young people ages 20 to 24 are employed full-time.

Programs/Services

- **Division of Early Learning.** Ensures access to high-quality early childhood development programs from birth to kindergarten entry. This division includes the following activities:
 - **ECE Child Care Subsidy Program** – administers the subsidy provider payments for early child care services provided to eligible children;
 - **Early Childhood Support Services** – inspects and licenses child development facilities, receives and investigates complaints and unusual incidents against child development facilities, monitors child care subsidy providers and grantees, provides administrative and management activities to support ECE programs, and administers the Head Start State Collaboration program;
 - **Professional Development Assistance** – administers and manages the District-wide ECE professional development system to comply with the Federal Child Care and Development Fund Block Grant requirements
 - **Pre-K Expansion Program** – administers and manages the Pre-Kindergarten program in accordance with the Pre-Kindergarten Expansion and Enhancement Act of 2008.
- **Elementary, Secondary & Specialized Education (ESSE).** Ensure all elements of the District’s accountability framework are implemented in accordance with commitments set forth in DC’s Elementary and Secondary Education Act (ESEA) flexibility waiver and in the Individuals with Disabilities Education Act (IDEA). This division includes the following activities:
 - **Teaching and Learning** –oversight and management of federal grant programs under ESSE for grades K - 12 that provide services to students during school hours, programs for English Language Learners, programs for teacher professional development, and school improvement activities and functions;
 - **Educator Licensure and Program Accreditation** – issues state educator licenses and credentials and approves and accredits educator preparation programs in the District;
 - **ESEA Waiver and Race to the Top Implementation** – The District of Columbia was one of 12 states awarded a Race to the Top grant by the U.S. Department of Education. This program required the District of Columbia to develop a comprehensive reform initiative built around four assurance areas: Common Core Standards and Assessments, Data and Accountability, Great Teachers and Leaders, and Turning Around the Lowest-Performing Schools. The District was also awarded an ESEA waiver. This division supports implementation of state level activities required by the waiver, including the State System of Support;
 - **Community Learning** – provides oversight and management of federal grant programs under ESSE for educational services that may occur outside the regular school program, including programs and services for homeless students and neglected and delinquent youth, and home-based instruction of

- students;
- **Wellness and Nutrition Services** – health education team. Also works with child and adult care centers, schools, and community-based organizations to build their capacity to promote positive healthy behaviors for youth and certain adults in the District of Columbia;
 - **Office of Public Charter School Financing and Support** – manages several federally funded programs for public charter school facility financing, including the Revolving Direct Loan Fund for Public Charter School Improvement, the Revolving Credit Enhancement Fund, the City Build Incentive Grant program, and the Charter School Incubator Facility Initiative. In addition, the OPCSFS manages the District’s federal Charter Schools Program grant from the United States Department of Education, which funds the start-up and implementation of new public charter schools.
 - **Specialized Education.** Ensures the delivery of timely, legally compliant, and high-quality services to children with disabilities from birth through age 22, ensuring LEA compliance with Parts B and C of the Individuals with Disabilities Education Act (IDEA). ESSE oversees the development and promulgation of state policy governing special education; monitors LEAs, nonpublic, and early intervention providers to ensure their compliance with law; monitors the allocation and administration of IDEA grant funds to LEAs; provides training and technical assistance to LEAs and providers; and investigates and helps resolve District complaints relating to special education.
 - **Training and Technical Assistance**– training and technical assistance to LEAs and other public agencies serving students with disabilities to ensure staff of those agencies are equipped to meet the needs of children and ensure compliance with all aspects of Part B IDEA;
 - **Policy and Systems Initiatives** – develops and revises special education policies and regulations, coordinates with internal District government agencies and community partners to ensure that all District students receive a free and appropriate public education, and develops and administers procedures to ensure that students are educated in the least restrictive environment appropriate to meet their needs;
 - **Fiscal Policy and Grants Management** – develops and implements Parts B of IDEA’s fiscal grant policies and procedures; develops and manages the application process and the allocation of flow-through grant funds to IDEA subrecipients; resolves past

federal A-133 audit findings; and develops and manages the Office of Special Education's Local, court-ordered, and Federal Grant funds;

- **Monitoring and Compliance**— implements IDEA requirements in all LEAs and early intervention providers through the establishment of a system of monitoring;
 - **Blackman Jones** – ensures compliance to the Blackman-Jones Consent Decree and Alternative Dispute Resolution (ADR) agreements related to federal civil class actions [REDACTED]
 - **Incarcerated Youth** – ensure compliance with IDEA for incarcerated students attending the DC Jail School and continued compliance with the J.C. vs. Vance case civil class action through an intra-District agreement with the District of Columbia Public Schools.
- **Postsecondary and Career Education** – creates opportunities for District residents to attend postsecondary educational institutions as well as assists adult residents in obtaining literacy proficiency, and acquiring a GED or similar secondary diploma. In addition, the division leads the

District's career and technical education efforts at both the secondary and postsecondary levels. This division includes the following activities:

- **Higher Education Financial Services and Preparatory Programs** – provides comprehensive information, services, and resources to ensure that District learners are fully prepared to gain access and achieve success in postsecondary education, and manages the following grants, programs, and initiatives: DC Tuition Assistance Grant (DC TAG), Mayor's Scholars Program, DC Adoption Scholarship Program, United States Senate Youth Program (USSYP), Advanced Placement Test Fee Program, the College Access Challenge Grant, College Application Week, Early College Program, the College & Credential Completion Network (C3N); and the Youth Re-engagement Center;
- **Adult and Family Education** – expands access to high-quality education by providing the re-granting of federal and Local dollars through the independent competitive granting process for the provision of adult education services, including Adult Basic Education (ABE), English Literacy Programs (ESL), Workplace Literacy, and Family Literacy services;
- **Career and Technical Education** – uses federal funds available under the Carl D. Perkins Act to foster the rebirth and renewal of career-technical education in the District of Columbia, and supports the implementation of the District's CTE Strategic Plan through targeted supports to secondary (including grades 6-8) and postsecondary schools and institution;
- **General Educational Development**

- **(GED) Testing and Verification** – serves as the official center under the GED Testing Service and the single source for administering the Official GED Tests and issuing authentic GED credentials in the District of Columbia; and
 - **Education Licensure Commission** – establishes standards of quality for post-secondary educational institutions in the District of Columbia and ensures that institutions under its jurisdiction meet and adhere to set laws and regulations. The Commission consists of five Mayoral appointed members according to regulatory authority.
- **Special Education Transportation**, also known as the Office of the State Superintendent of Education Division of Student Transportation (OSSE-DOT), supports learning opportunities by providing safe, reliable and efficient transportation services that enhance learning opportunities for eligible students from the District of Columbia. OSSE-DOT operates through the following programs:
 - **Parent Call Center**
 - **Routing and Scheduling**
 - **Investigations**
 - **Terminal Operations**
 - **Fleet Management**

First Quarter CY2015 Hot Button Issue(s)

- **Support successful launch of Quality Improvement Network hubs.** Three hubs are comprised of community-based organizations providing comprehensive wraparound services as determined by the Head Start standards. Initiative is high-profile and early learning community is actively involved.
- **Accountability 2.0.** State accountability system as mandated by the US

Department of Education. Efforts are being made to revise methodology by which schools are held accountable for student outcomes. Schools Technology fund distribution and monitoring to support schools Next Generation Assessments (PARCC).

- **Partnership for Assessment of Readiness for College and Career (PARCC) and Next Generation Assessments.** 2015 will see the implementation of a next generation standardized test, a new portfolio of assessments including PARCC, next generation science and health assessments aligned with new standards. These assessments are technology-based and introduce a higher level of rigor than previous assessments. We expect a significant drop in proficiency rates and a significant need to increase awareness in the public.
- **Competency-based graduation requirements.** OSSE, the SBOE, and LEAs have been exploring the revision of DC's graduation requirements to include competency based options for credit accumulation. OSSE has proposed a broad set of pathways to the SBOE that includes a process for competency-based coursework, assessment-based demonstration of competency, portfolio-based demonstration of competency, and standard set-a-time demonstration. OSSE expects to bring a full proposal to SBOE for approval by December.
- **Regulations**
 - Discipline
 - Educator Licensure
 - Residency
 - Childcare Licensing Regulations and Day Care Amendment Act of 1979.
- **D.L. v. District of Columbia.** Civil lawsuit regarding the provision of transition services for students moving from early

intervention to school-age special education services.

- **Blackman/Jones.** Two court cases involving the failure of the District to provide sufficient transportation and timely resolution of due process claims for students with special needs. OSSE has exited the first case and is in the process of exiting federal court oversight in the second.
- **Workforce Investment and Opportunity Act of 2014.** It is important to continue our relationships with DOES and the Workforce Investment Council as this collaboration is mandated in the Workforce Investment and Opportunity Act of 2014, which requires the Workforce Investment Council to develop a joint plan for government agencies managing adult education, employment, and human services to work together toward common goals of educational attainment and employment. [REDACTED]
- **STAY schools.** Because DCPS is decreasing emphasis on adult education and ramping up efforts to support struggling ninth-graders, the LEA is re-thinking the structure and governance of the STAY schools. Because this dovetails into adult education and because OSSE's newly opened Re-engagement Center will need educational options for its clients, OSSE should continue to be a part of this re-envisioning of the STAY schools and should step into a leadership role, where appropriate.

- **FTEs.** Postsecondary is in need of several FTE's, to support the expansion of its work. The Reengagement Center is fully operational, and the employees detailed from DOES may need to become full-time OSSE employees because of restrictions on the amount of time an employee can be detailed. This will require an enhancement in the FY16 budget. The Educational Licensure Commission needs at least one FTE as it takes on responsibility related to certifying institutions so that they can offer benefits to veterans. The funds are available through the ELC. The Division is currently leading the effort to write regulations for alternative education and will require one new FTE to foster best practices among schools, ensure accountability, and leverage the new resources to ensure that they truly aid at-risk students. Funding for this position would have to be found.
- **The College Access Challenge Grant.** The grant expires in 2015. The Division has used these funds to support college awareness, readiness, and enrollment as well as salaries for a few staff members. The Division is seeking private and federal grants to cover the costs of these important programs and will require the agency's support in identifying and writing the grants.
- **Completing carry over analysis for FFY14 grants to minimize lapsed funding.** We have worked over the last year to reduce these funds and need to ensure that we continue the progress we made.
- **Preparation for agency A-133 audit.** OSSE has historically received significant findings. OSSE has made recent progress in reducing these findings and must continue our focus to reduce the risk in this area.
- **Pupil enrollment.** Finalize enrollment audit appeals and notification of final enrollment audit report.

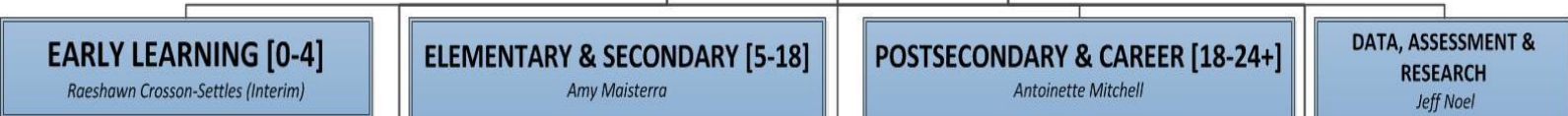
- **Federal Grants Management Conference.** OSSE to finalize plans for annual conference and confirm participant lists.
- **Student Transportation**
 - Inclement Weather Planning / Response
 - SY14-15 Extended School Year Program (ESY) Transportation Planning
- **OECD Childcare Subsidy.** Transition of from DHS to OSSE. This is a legacy system that is being replaced under the Division of Early Learning Modernization efforts however it is in OSSE's best interest to take over the care and maintenance of the existing system.

Organization Chart



Office of the State Superintendent of Education

ORGANIZATIONAL SUMMARY

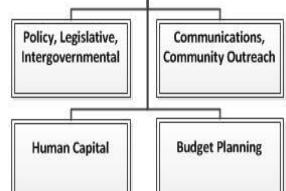
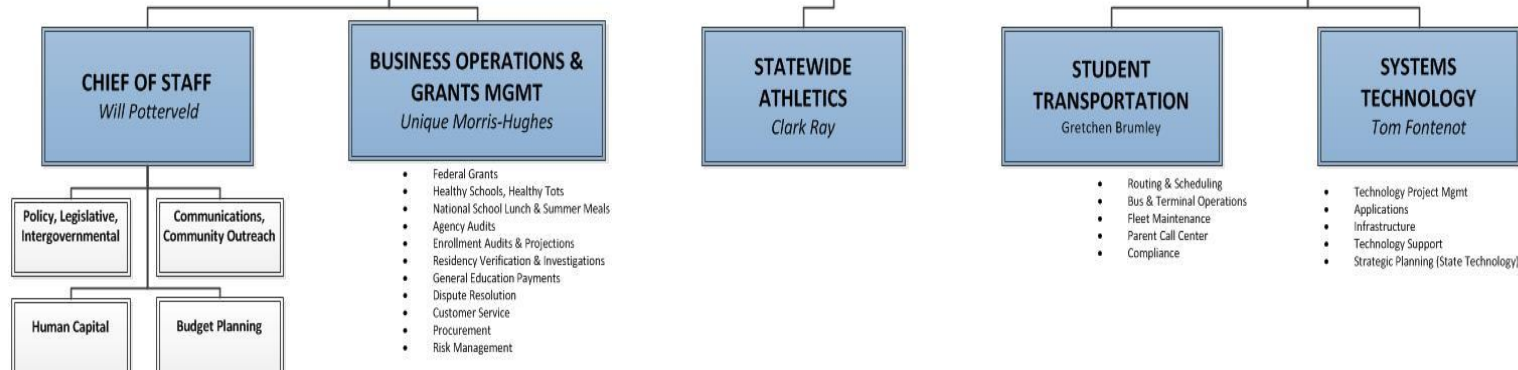


- Early Intervention
- Program Quality
 - Childcare Subsidy Program
 - CCDF
 - Head Start Collaboration
- Childcare Licensing & Compliance
- Administrative Services
 - Childcare Eligibility
 - Attendance

- K12 State Reform
- Special Population Capacity
- Community Learning & School Support
- Educator Effectiveness
- Physical Education, Wellness & Behavioral Health
 - Youth Risk Behavior Survey
- Policy, Planning & Charter Capacity
- ESEA Waiver
- Quality Assurance & Monitoring

- Higher Education
- Tuition Assistance Grants (TAG)
- Career & Technical Education
- Adult & Family Education
- Education Licensure Commission
- Disconnected Youth
- GED Administration

- Data Collection & Research
- Assessment
- Federal Reporting
- Data Systems (State Accountability)
- Program Improvement



- Federal Grants
- Healthy Schools, Healthy Tots
- National School Lunch & Summer Meals
- Agency Audits
- Enrollment Audits & Projections
- Residency Verification & Investigations
- General Education Payments
- Dispute Resolution
- Customer Service
- Procurement
- Risk Management

- Routing & Scheduling
- Bus & Terminal Operations
- Fleet Maintenance
- Parent Call Center
- Compliance

- Technology Project Mgmt
- Applications
- Infrastructure
- Technology Support
- Strategic Planning (State Technology)

Boards and Commissions relevant to the agency:

Board Name	Name of Chairperson	No. of Members
Career & Technical Education Working Group	Antoinette Mitchell	6
DC Public Charter School Credit Enhancement Fund Committee	Katie Cox	5
Education Licensure Commission	Angela Lee	5
Enrollment Audit Stakeholders Working Group	Unique Morris-Hughes, Rochelle Wilson	14
Executive Advisory Board	Antoinette Mitchell	9
Farm to School Advisory Board	Nancy Brenowitz Katz, Erica Steinhart	21
Healthy Youth and Schools Commission	Nancy Brenowitz Katz (interim)	13
OSSE Advisory Board on Interscholastic Athletics	Clark Ray	9
OSSE Health and Wellness Advisory Board	Kafui Doe	34
OSSE Risky Behaviors Advisory Board	Kafui Doe	28
School Garden Advisory Board	Nancy Brenowitz Katz, Sam Ullery	30
State Early Childhood Development Coordinating Council	Jesus Aguirre (Co-Chair)	
State Secondary Transition Community of Practice	Dr. La'Shawndra Scroggins	55
Title IX Working Group	Clark Ray and Marie Rudolph	8
Youth Risk Behavior Advisory Committee	Kafui Doe	38
Youth Advisory Committee	Yuliana Del Arroyo and Kafui Doe	17

Budget FY2015

Total Budget GD0	\$450,917,922
Total Budget GO0	\$98,562,426
Total Budget GN0	\$74,339,737
Total Budget GC0	\$675,407,996

No. of Employees

Current No. of FTEs	494 GD0
	1363 GO0

Union Representation

Union(s)	Union Representative	No. of Members
American Federation of Government Employees (AFGE 2725)	[REDACTED]	6
American Federation of Government Employees (AFGE 1403)	[REDACTED]	6
American Federation of State, County & Municipal Employees (AFSCME 1959)	[REDACTED]	1283
American Federation of State, County & Municipal Employees (AFSCME 2921)	[REDACTED]	8
American Federation of State, County & Municipal Employees (AFSCME 2401)	[REDACTED]	25
Teamsters 639	[REDACTED]	109

Facility Location(s)

Facility Name / ID	Address	Zip Code	Ward	Main Phone No.
Main Office	810 1st St NE	20002	6	202-727-6436
Sumner School	1201 17th St NW	20036	2	202-730-0478
GED Testing and Verification	441 4th St NW	20001	2	202-274-7173
5th St Bus Lot	2115 5TH St NE	20002	5	202-576-6306
New York Ave Bus Lot	1345 New York Ave NE	20002	5	202-724-1330
Adams Place Bus Lot	2000 Adams Place NE	20018	5	202-576-6883
Southwest Bus Lot	4 DC Village Lane SW	20032	8	202-729-2014
Youth Reengagement Center	4058 Minnesota Avenue NE	20019	7	202-671-2539

Key Projects/Initiatives

Project/Initiative Name	Brief Description	Delivery Date
State System of Support	New ESEA State Improvement Plan model for LEAs, with a focus on LEAs with schools in priority or focus status requiring OSSE intervention. Includes four strands- LEA professional development through three LEA Support Institutes, best practice dissemination, targeted turnaround coaching for underperforming schools, and implementation of cross-functional LEA support teams within OSSE.	June 2015
State Performance Plan- IDEA	New 6 year state improvement plan due to USDE OSEP in February and April, 2015.	February, April, 2015
SOAR grant competition	Federal grant to support the creation of high quality charter seats. Includes components that support facilities, programmatic initiatives and teacher development.	Anticipated Jan 2015
State Performance Plan- IDEA	New 6 year state improvement plan due to USDE OSEP in February and April, 2015.	February, April, 2015

Project/Initiative Name	Brief Description	Delivery Date
Quality Rating Improvement System (QRIS)	To develop a quality rating framework in order to implement an approach to assess, rate, and communicate a common definition of quality among ALL publicly funded birth to five programs (charters, traditional public, community-based child care); Families need a meaningful metric for evaluating the program that will best support their child’s needs. The goal is to establish a singular system that rates all early learning programs across sectors. The intent is to increase the number of high quality early learning programs that meet the learning and developmental needs of children in comprehensive and enriching environments	May 2015
CDA/CTE Academy	The Child Development Associate Jumpstart Initiative is a partnership between DC high schools and the OSSE Divisions of Career Technology and Early Learning to ensure that high school students, upon graduation, are credentialed and ready to enter the early education work force. These students begin to study early childhood development during their sophomore year, and complete the credential prior to graduation. They will also have the option of launching their college experience as it represents higher education credits earned while they are still in high school.	January 2015
Resource & Referral Expansion	The Child Care Resource and Referral expansion introduces families to the array of early learning services provided by OSSE-DEL. Families will be provided with free, customized child care referrals to local child development centers and receive information and guidance on applying for financial assistance through the OSSE child care subsidy program.	November 2015
Licensing Regulations Enhancement	Establish the foundation for quality child care among all licensed child development centers in the District by revising licensing regulations. Maintain top in the nation status.	January 2015

Project/Initiative Name	Brief Description	Delivery Date
Workforce Development – Capacity Building	<p>OSSE is building capacity across the District through the development of external partnerships with organizations, engaging institutions of higher education, and increasing technical assistance to early learning professionals. Currently, the Division of Early Learning is laying foundations and building capacity through:</p> <ul style="list-style-type: none"> ● An agreement and participation in the Teacher Education And Compensation Helps T.E.A.C.H planning and development and implementation of consortium tasks for advancing higher education scholarship partnerships; ● Building capacity and expertise through articulated agreements with local two and four year colleges offering early childhood development degrees; ● Actively participating in interagency Head Start School Readiness Advisory and Head Start Association collaborative goals; 	November 2014
K-3 Formative Assessment Consortium	To inform policy and program improvements in the years before kindergarten. DC joined a 10 state consortium – to develop a Kindergarten Entrance Assessment embedded in a K-3 formative assessment.	Ongoing
Quality Improvement Hubs	To create a network of neighborhood-based agency hubs to provide technical assistance TA and job-embedded coaching to infant/toddler teachers and family child care providers.	Federal EHS-Child Care Partnership award announcement in January 2015.
Pre-K Incentive	The vast majority of pre-K aged children are in programs based in charters and DCPS. Approximately 900-1000 children are in full time child care programs that are not required to meet pre-K standards and most of them receive a rate that is far less than the rate provided to pre-K programs in public charters and DCPS. In order to ensure that there is parity in quality and resources across pre-K programs, OSSE is recommending that the pre-K incentive program requirements be applicable to ALL settings that serve pre-K aged children in community-based settings with public funds and that there is parity in the reimbursements provided to providers across all three sectors. CBOs that cannot meet the requirements in the Pre-K Act should not be eligible to continue to receive public funds.	Ongoing

Project/Initiative Name	Brief Description	Delivery Date
Implementation of new State Assessments	<p>The District of Columbia administers multiple assessments annually in accordance with DC and federal law. These district-wide assessments are an important source of data on students' progress and proficiency relative to DC's educational standards. In the 2014-15 school year, DC will begin transitioning to a system of Next Generation Assessments. These new assessments will be aligned to the Common Core State Standards, Next Generation Science Standards, and DC Standards. These assessments will also be technology- and computer- enhanced. This will be a major transition, but one that will allow DC students to demonstrate their knowledge in a more accurate and engaging way. The Next Generation Assessment transitions include:</p> <p>-2014-2015</p> <ul style="list-style-type: none"> • PARCC will replace the DC CAS Reading, Math and Composition • A new science exam aligned to the Next Generation Science Standards will replace the DC CAS Science • A new health exam will replace the DC CAS Health • NCSC will replace the DC CAS-Alt in ELA and Math for students with significant cognitive disabilities, while the Alt Science assessment will remain a portfolio based assessment for the 2014-15 school year. <p>-2015-2016</p> <ul style="list-style-type: none"> ○ ASSETS will replace ACCESS as DC's assessment of English Language Proficiency 	Spring 2015 testing season
Enterprise Grants Management System	The Enterprise Grants Management System (EGMS) was designed to improve the management and administration of grants. EGMS was established to provide users with information on the status of project applications and awards of Federal and State funds. In CY15, phase two of the project will begin with implementing additional grant programs, adding additional functionality, and providing training.	Ongoing
A-133 Single Audit	Manages the relationship between OSSE programs and the auditor as part of the District's federally-required annual A-133 single audit review.	February 2015 – June 2015
Discipline regulations	Working to revamp the discipline regulations as they apply to school aged children in the District. Goal is to have proposed regulations out by the end of calendar year 2014, with the need to publish final regulations in Jan/Feb.	Jan/Feb. 2015
Higher Ed Licensure Commission Bill	This bill is currently with the Council's Committee on Education at the request of OSSE. We are trying to have this bill moved before the end of the Council period but may need to go back and have this reintroduced – it will allow a number of small changes to the operations of the ELC, but the main effect will be to allow OSSE to serve as a state portal for an agreement with a regional consortium so that universities located in the District will not have to pay fees to	Jan/Feb. 2015

	other states in which our universities would like to provide distance learning	
Project/Initiative Name	Brief Description	Delivery Date
Healthy Tots Regulations	These are required by the Healthy Tots Act of 2014 – we are in the process of reviewing of them internally with the goal of putting them out for proposed rulemaking at the beginning of December and final rulemaking in mid-Jan.	Jan 2015
PARCC Assessment Regulations	We need to change the regulations to align them with the testing groups that occur within PARCC – for example, the regulations currently require testing in the 10 th grade, but we are going to be requiring ELA Level II and Math Level II for accountability purposes, and these courses may not always be given in the 10 th grade. Instead, the accountability structure will be aligned to the student level and not necessarily always the 10 th grade.	Jan 2015
Healthy Schools Act Regulations	Per the Healthy Schools Act of 2010, regulations need to be done – these regulations were never promulgated, so we need to do so.	March/April 2015
Private School Advisory Board/ Possible Regulations	Exploring whether regulations need to be done to regulate how we authorize private schools to operate in the District. Note that we meet quarterly with a Private School Advisory Board.	March/April 2015
Special Education Regulations	We are undertaking a rewrite of the Chapter 30, Title 5E of the DCMR and moving these regulations, as well as updating them, to OSSE’s Title 5A. This will be done over the next year and running into 2016.	2015-2016

Capital Programs

Project Name	Budget ID	Funding Source	Project Budget	Current Balance	Delivery Date
Student Information System	SIS01C	GO Bonds	\$ 4,000,000	\$ 3,773,114	July 2017
Statewide Longitudinal Education Data (2008 – 2015) / Special Education Data System (2008 – 2009) / Early Childhood Ed Information Mgmt System (2009 -2013)	N2802C	Master Equipment Lease	\$ 24,663,288	\$ 1,000,000	September - 2015
Special Education Data System	N2803C	Master Equipment Lease	\$ 9,400,000	\$ 2,712,877	September 2015
Special Education Vehicle Replacement	ELC-BU0B2 GO0-BU0B0	Equipment Lease-302 GO Bonds-300 Pay Go-301	\$ 10,347,000 \$ 10,862,000 \$1,051,000	\$9,403,000	FY2016
Primary Bus Terminal	GO0-BU405	GO Bonds-300	\$ 2,340,000	\$2,340,000	FY2015

Bus Facility Upgrades	GO0-BU404	GO Bonds-300	\$ 1,400,000	\$ 1,400,000	FY2015
Project Name	Budget ID	Funding Source	Project Budget	Current Balance	Delivery Date
DOT GPS	GO0-BU501	GO Bonds-300	\$ 1,000,000	\$ 1,000,000	FY2015

Important/Significant Dates

Event	Brief Description	Delivery Date
LEA Support Institute #2: PARCC and Common Core	OSSE will convene three times annually to provide training and ongoing support to all LEAs/schools in SY14-15	January 2015
LEA Support Institute #3: Best Practice Dissemination	OSSE will convene three times annually to provide training and ongoing support to all LEAs/schools in SY14-15	May 2015
2 nd Annual Infant & Toddler Conference	The 2 nd Annual Infant and Toddler Conference will bring together a host of Infant and Toddler teachers from across the District to present the latest research trends and best practices in the field. During this 3-day conference, teachers are provided with professional development workshops conducted by local, regional and national experts in the field of early childhood education.	April 2015
Month of the Young Child	The Month of the Young Child is a month long celebration of the young children, and their teachers, in the District. This celebration was originated by the National Association for the Education of Young Children (NAEYC), and is an annual weeklong celebration of the early childhood population. During this month, the Division of Early Learning, along with other community organizations and agencies, will host a variety of events and activities for children, families, teachers and community members.	April 2015
Class Assessment Scoring System (CLASS) Administrations – PreK, Infant & Toddler	As a measure of quality in early childhood programs, CLASS will be administered in a number of infant, toddler and Pre-K programs throughout the District. As results are received, we will begin to provide targeted professional development to classroom and program staff in an effort to raise the scores in the areas that showed the greatest need for growth.	November 2014

Event	Brief Description	Delivery Date
New State Assessment Testing Window	OSSE will administer the PARCC windows for the Performance Based Assessment (PBA) and End of Year (EOY) components	PBA: March 2-May 8, 2015 EOY: April 13-June 5, 2015
New Science and Health Assessments	OSSE will introduce new science and health assessments in 2014-2015. The new science assessment will be based upon the Next Generation Science Standards (NGSS) adopted by DC early this year. These assessments will be administered to the same grades as in previous years (5 th , 8 th and once in high school, aligned to biology and high school health and physical education content). These assessments will be available in both computer and paper based versions, and technological specifications for these assessments will align with the PARCC as much as possible.	2014-2015

Key Contracts

Project Name	Vendor	Total Contract Value	Contract Term
Medicaid Billing	ACCELIFY	\$616,375.00	10/2014-9/2015
DC Parent Center	ADVOCATES FOR JUSTICE & EDUCATION	\$633,335.00	7/2014-12/2014
Consultative Services (Blackman-Jones)	CROSS JOFTUS	\$989,560.00	10/2014-2/2015
Automated Data Transfer Solution	INCAPSULATE, LLC	\$611,000.00	10/2014-1/2015
DC Comprehensive Assessment System	NCS PEARSON, INC	\$709,012.00	12/2013-12/2014
ADT Fast Track Project	NEW LIGHT TECHNOLOGIES	\$575,000.00	1/2014-1/2015
Development of SPEDS	TELECOMMUNICATIONS DEV CORP	\$3,378,259.12	10/2014-9/2015
Business Project Management - SEDS	URBAN POLICY DEVELOPMENT, LLC	\$1,620,525.00	10/2014-9/2015
Provide Bus Drivers and Attendant with Uniforms	MORGANS	\$605,950.00	11/2014-11/2015
Nursing services for students with disabilities who ride the school bus	NATIONAL NURSES	\$837,607.60	1/2014-1/2015
Bus Maintenance & Repair	Fleetpro Inc.	\$ 900,000	6/2014 – 5/2015
Bus Maintenance & Repair	K. Neal Idealease, Inc.	\$ 900,000	9/2014 – 9/2015
Bus Maintenance & Repair	Odyssey Bus & Truck Repair	\$ 900,000	6/2014 – 5/2015

Project Name	Vendor	Total Contract Value	Contract Term
Bus Maintenance & Repair	Precision Truck Repair, Inc.	\$ 900,000	6/2014 – 5/2015

Key Agreement(s) / Memorandum(s) of Understanding

Project Name	Brief Description	Agreement Term
MOA between OSSE & Johns Hopkins University	Dietetic Intern	Oct 2014 – Sept 2019
MOU between OSSE & OCA	OCA will engage the services of a consulting firm to review current DOT performance benchmarks	Date of execution –Sept 2015
MOU between OSSE & MPD	MPD will provide security at DCSAA Championship events	Nov 2014 – Sept 2015
MOU between OSSE & FEMS	FEMS will provide medical coverage at DCSAA Championship events	Nov 2014 – Sept 2015
MOU between OSSE & DCHR	Criminal background check and drug and alcohol check services	Oct 2014 – Sept 2015
MOU between OSSE & DBH	Continue wraparound services through a CME for 120 students at any given time as identified by their respective schools	Date of execution – Sept 2015
MOA between OSSE & OAG	OSSE provides OAG access to SLED data for purpose of residency investigations	Date of execution – date in which OAG no longer has legal responsibility for prosecuting on behalf of OSSE
MOU between OSSE & DOES	Work in collaboration to provide access to assessment, screening, literacy and remediation, occupational literacy, digital literacy, career essential boot camp, post sec education and training services to DC residents	Oct 2014 – Sept 2015
MOA between OSSE & DC STEM	CASE will administer and guide the DC STEM Network to become sustained and systemic w/OSSE as an essential support	Oct 2014 – Sept 2015
MOU between OSSE & DDOE	OSSE received funds from Sustainable DC Innovations Grant to build an outdoor classroom	Date of execution – Sept 2015
MOU between OSSE & DHS	ESA has requested the services of OSSE to provide financial assistance for eligible recipients of Temporary Assistance for Needy Families (TANF) to pursue post-secondary degrees or certificates	Oct 2013 – Sept 2014 or until funds run out
MOU between OSSE & DGS	DGS will place twelve (12) card readers on the interior of stairwell doors for employee access.	Aug 2014 – Sept 2014 or until work is complete (work not complete to date)
MOU between OSSE & DOH	To support combined efforts between OSSE and DOH to promote Early Childhood Development Programs	June 2014 – June 2015

Project Name	Brief Description	Agreement Term
MOA between OSSE & PCSB	Data sharing agreement consistent with the Family Educational Rights and Privacy Act	Date of execution – until terminated
MOU between OSSE & DCPS	OSSE will transfer funds to DCPS schools who qualify for the DC Physical Activity for Youth (DC PAY) grant	June 2014 – Sept 2015
MOU between OSSE & UDC	UDC will develop a comprehensive system to track a student who completes the teacher preparation programs and works as an educator in DC for five years	Feb 2014 – Dec 2016
MOA between OSSE, DME & DOES	DC Youth Re-Engagement Center	Date of execution –Sept 2016
MOU between OSSE & PCSB	PCSB has primary responsibility to hold charter schools accountable to waiver provisions	Remain in effect for the duration of the waiver and after the final termination date unless terminated in writing upon the request of either OSSE or PCSB
MOA between OSSE & DCPS & CFSA	Improve educational outcomes for foster children and youth	Shall be continuing from the date of execution unless terminated in writing
MOU between OSSE & Consortium KEA within KE Formative Assessment System Enhanced Assessment Instruments Grants Program CFDA	Kindergarten Entry Assessment	Date of execution –four (4) years
Department of Human Resources	To provide criminal background checks and mandatory drug and alcohol tests for OSSE-DOT employees.	Oct 2014 – Oct 2015
Office of Labor Relations & Collective Bargaining	To provide union negotiation and contract, litigation, and program support services.	Oct 2014 – Sept 2015
Department of General Services	To provide security services for the four (4) OSSE-DOT bus terminal locations.	Oct 2014 – Sept 2015

Grant(s) Awarded (or Pending Award) to Agency

Grant Name	Name of Grantor	Net Authorization	Net Remaining Balance	Grant Expiration
ARRA - Race to the Top	Dept of Ed	\$74,998,962.00	\$16,306,536.00	9/30/2015
School Improvement Grant 1003(g)	Dept of Ed	\$1,820,838.00	\$325,552.41	12/30/2015
School Improvement Grant 1003(g)	Dept of Ed	\$1,573,847.00	\$1,568,667.74	12/30/2016
Title V, Part B - Charter School Program	Dept of Ed	\$17,411,765.00	\$9,902,724.52	11/2/2015

Grant Name	Name of Grantor	Net Authorization	Net Remaining Balance	Grant Expiration
SOAR Act Grant	Dept of Ed	\$9,900,000.00	\$8,294,933.67	2/12/2016
IDEA Part B 611	Dept of Ed	\$16,345,562.00	\$6,503,480.88	12/30/2015
IDEA Part B 619	Dept of Ed	\$217,081.00	\$188,305.73	12/30/2015
IDEA Part C	Dept of Ed	\$2,056,021.00	\$320,560.78	12/30/2015
College Access Challenge Grant	Dept of Ed	\$1,423,500.00	\$820,423.59	11/14/2016
Title I, Part A	Dept of Ed	\$44,013,016.00	\$12,961,082.51	12/30/2015
Title I, Part D	Dept of Ed	\$216,054.00	\$207,209.37	12/30/2015
Title X, Part C - McKinney Vento	Dept of Ed	\$184,482.00	\$138,127.85	12/30/2015
Title IV, Part B - 21st Century	Dept of Ed	\$5,355,515.00	\$3,060,060.31	12/30/2015
Title III, Part A	Dept of Ed	\$894,422.00	\$376,002.14	12/30/2015
Title II, Part D - Math & Science Partnerships	Dept of Ed	\$705,964.00	\$448,097.05	12/30/2015
Title II, Part A	Dept of Ed	\$10,582,856.00	\$3,961,906.32	12/30/2015
Title II, Part A - SAHE	Dept of Ed	\$286,405.00	\$267,891.35	12/30/2015
State Assessments Grant	Dept of Ed	\$3,260,458.00	\$606,138.07	12/30/2015
School Improvement Grant 1003(g)	Dept of Ed	\$1,427,660.00	\$1,427,660.00	1/2/2018
SOAR Act Grant	Dept of Ed	\$18,953,880.00	\$16,180,407.98	3/5/2019
Adult Education Federal Grant	Dept of Ed	\$1,257,812.00	\$489,581.59	12/30/2015
Perkins Career and Technical Education	Dept of Ed	\$4,214,921.00	\$1,837,383.30	12/30/2015
IDEA Part B 611	Dept of Ed	\$17,324,762.00	\$17,324,762.00	12/30/2016
IDEA Part B 619	Dept of Ed	\$217,082.00	\$217,082.00	12/30/2016
IDEA Part C	Dept of Ed	\$2,148,926.00	\$2,148,926.00	12/30/2016
College Access Challenge Grant	Dept of Ed	\$1,392,000.00	\$1,392,000.00	11/14/2016
Title I, Part A	Dept of Ed	\$43,227,971.00	\$43,227,971.00	12/30/2016
Title I, Part D	Dept of Ed	\$169,301.00	\$169,301.00	12/30/2016
Title X, Part C - McKinney Vento	Dept of Ed	\$189,585.00	\$189,585.00	12/30/2016
Title IV, Part B - 21st Century	Dept of Ed	\$5,631,913.00	\$5,631,913.00	12/30/2016
AP Testing Fees	Dept of Ed	\$141,334.00	\$141,334.00	11/2/2015
Title III, Part A	Dept of Ed	\$881,081.00	\$881,081.00	12/30/2016
Title II, Part D - Math & Science Partnerships	Dept of Ed	\$744,842.00	\$744,842.00	12/30/2016
Title II, Part A	Dept of Ed	\$10,577,941.00	\$10,577,941.00	12/30/2016
Title II, Part A - SAHE	Dept of Ed	\$286,281.00	\$286,281.00	12/30/2016
State Assessments Grant	Dept of Ed	\$3,271,687.00	\$3,271,687.00	12/30/2016
School Improvement Grant 1003(g)	Dept of Ed	\$1,427,660.00	\$1,427,660.00	*
SOAR Act Grant	Dept of Ed	\$18,953,880.00	\$18,953,880.00	*
Adult Education Federal Grant	Dept of Ed	\$1,258,578.00	\$1,258,578.00	12/30/2016

Grant Name	Name of Grantor	Net Authorization	Net Remaining Balance	Grant Expiration
Perkins Career and Technical Education	Dept of Ed	\$4,214,921.00	\$4,214,921.00	12/30/2016
Child Care Development Fund / Discretionary Block Grant	Dept of Health & Human Svcs	\$10,095,008.00	\$57,118.82	9/30/2014
Personal Responsibility Education Program	Dept of Health & Human Svcs	\$250,000.00	\$244,303.88	9/30/2015
Head Start State Collaboration	Dept of Health & Human Svcs	\$118,413.00	\$62,257.31	1/31/2015
Child Care Development Fund / Discretionary Block Grant	Dept of Health & Human Svcs	\$10,616,311.00	\$2,707,131.21	9/30/2015
Personal Responsibility Education Program	Dept of Health & Human Svcs	\$250,000.00	\$250,000.00	9/30/2016
Child Care Development Fund / Discretionary Block Grant**	Dept of Health & Human Svcs	\$10,616,311.00	\$10,616,311.00	9/30/2016
Head Start State Collaboration***	Dept of Health & Human Svcs	\$94,885.33	\$94,885.33	1/31/2016
Personal Responsibility Education Program****	Dept of Health & Human Svcs	\$250,000.00	\$250,000.00	9/30/2017
Child and Adult Care - Sponsor Admin	US Dept Agriculture	\$63,140.00	\$63,140.00	9/30/2015
Child and Adult Care - Cash for Commodities	US Dept Agriculture	\$451,579.00	\$451,579.00	9/30/2015
Fresh Fruits and Vegetables	US Dept Agriculture	\$1,686,016.00	\$1,686,016.00	9/30/2015
Temporary Emergency Food	US Dept Agriculture	\$162,816.00	\$162,816.00	9/30/2015
Temporary Emergency Food - Reserve	US Dept Agriculture	\$63,052.00	\$63,052.00	9/30/2015
Child Nutrition Block Grant	US Dept Agriculture	\$37,675,026.00	\$37,675,026.00	9/30/2015
National School Lunch Equipment Grant	US Dept Agriculture	\$71,589.00	\$71,589.00	9/30/2015
Direct Certification and Verification Grant	US Dept Agriculture	\$145,000.00	\$145,000.00	9/30/2015
State Administrative Expense	US Dept Agriculture	\$515,778.00	\$515,778.00	9/30/2015

*Award not yet received, authorized amount based on last year's award

**Full award not yet loaded in PMS system, net authorized amount based on last year's award

***Net authorized amount based on OCFO Budget Load

****Grant award not yet loaded in OSSE's SOAR system

