



Department of Behavioral Health (DBH) - RMO

Stephen T. Baron, Director
64 New York Ave., NE, 3rd Floor
Washington, DC 20002
(202) 673 - 2200
<http://dbh.dc.gov/>

Central Purpose

- The mission of the DBH is to support prevention, treatment, resiliency, and recovery for District residents with mental health and substance use disorders through the delivery of high-quality, integrated services.
- DBH is the State Mental Health Authority (SMHA) and the Single State Authority (SSA) for Substance Abuse. DBH provides oversight of the public mental health and substance use systems, and operates the District's public inpatient psychiatric hospital, Saint Elizabeths Hospital. DBH also provides some direct services to District residents with mental health and/or substance use issues.

Key Facts

- DBH served approximately 28,000 residents in FY13 (22,570 adults, 5,330 children and youth) for mental health or substance use disorder services on an outpatient basis through 72 certified community based providers. Outpatient mental health services are primarily financed through Medicaid (fee-for-service); substance use services are primarily funded through federal block grant and local funds. Additional services include:
 - Emergency psychiatric services
 - Extensive forensic program for pre- and post-trial individuals
 - Acute care beds in community hospitals
 - Emergency mobile crisis services for children/youth and adults
 - Homeless outreach
 - Same day services for children and adults
 - Robust child and youth services program with nine evidence-based practices, behavioral diversion court and psychiatric residential treatment facility placement as needed
- Housing support: DBH supports more than 2500 consumers in housing, including Permanent Supported Housing (PSH) for individuals able to live independently with some supports (1844 in FY13); and Supported Housing for individuals who may need more care to maintain themselves in the community (646 in FY13). DBH also has an active partnership with DHCD to fund additional residential units reserved solely for DBH consumers at or below 30% AMI.
- Saint Elizabeths Hospital (292 capacity) - primarily funded through local dollars. In FY14, 636 people were served at an average daily census of 268.
- Saint Elizabeths Hospital offers six residency and training programs including Advanced Dental Education in General Practice Residency, Clinical Psychology Doctoral Internship & Psychology Post-Doctoral Residency Program, Clinical Pastoral Education Residency, Psychiatry Residency Training Program, Creative Arts Therapies Internship Program and a Forensic Psychiatry Fellowship program.
- In FY14, the U.S. District Court ended the Department of Justice Consent Agreement which monitored quality of care at Saint Elizabeths. This Agreement was the last remaining external oversight of the Department, returning the department to local control. (The *Dixon* class action lawsuit

ended in February 2013 and the Corporate Integrity Agreement with the Federal DHHS ended in December 2013).

Goals/Performance Measures

DBH developed eight major goals for FY14 -15 as the State Authority for mental health and substance use disorders:

- Design and develop an integrated system of care and operational functions to develop an integrated system for individuals indeed of SUD and/or mental health care
 - Ensure that every individual seeking services is assessed for both mental health and substance use disorder needs
 - Develop the ability of the provider network to treat co-occurring disorders
 - Establish and measure outcomes for individuals with co-occurring mental health and substance use disorders as well as single illnesses with recovery as the goal
 - Establish a single credentialing process for both mental health and substance use disorder providers
 - Implement A-CRA (an evidence-based practice for integrated treatment for youth) at all four ASTEP providers
 - Implement Person-Centered Planning (PCP) throughout provider network
- Implement Medicaid reimbursement for substance use disorder services
- Identify the existing range of services currently provided through DBH and determine gaps in services and strategies for enhancing the efficiency and programmatic effectiveness of the system of care
- Develop and implement specific procedures to improve access to care
- Collect data and develop and use assessment strategies that support a data-driven decision-making process that will be used to determine the level of quality and consistency of care across the organization
 - Consolidate and enhance provider monitoring to ensure high quality services
 - CAFAS (Child and Adolescent Functional Assessment Scale) - requires input from all agencies serving a child and will eventually be able to be accessed by all agencies serving a child; will allow better coordination of care, assessment of outcomes and assessment of care providers
 - MHEASURE (Mental Health Expenditure and Service Utilization Report) Report published semi-annually on mental health services and supports
- Technology innovations implemented to support improved care and operations
 - iCAMS data management system active in DBH providers (MHSD, Howard Road, School-Based Mental Health and CPEP)
 - iCAMS to be utilized by community providers by December 1, 2014
- Maintain inter-agency collaborations to support integrated service delivery and the development and coordination of population-specific care of care and operations
 - MOUs with CFSA and OSSE to assist in mental health and substance use treatment for children
 - MOU with DDS for training of direct-care workers for individuals with both mental health and developmental disabilities
 - Partnership with DOH and DHS on Twelve-Cities grant for services to individuals with mental health, substance abuse, HIV issues and specially targeted to individuals receiving TANF
 - Partnership with DDS, DCOA, OVA, and DCHA on No Wrong Door planning grant for development of long-term supports and services coordinated care system
- Develop a Recovery Oriented System of Care (ROSC)

Programs/Services

- Behavioral Health Authority –
 - Office of Consumer and Family Affairs:

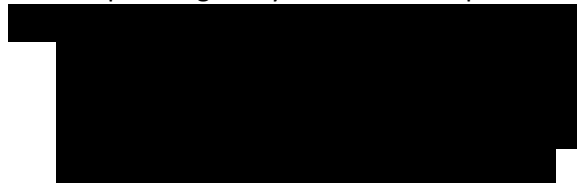
- Grievance Process
- Certified Peer Specialist Certification Program
- Consumer outreach
- Office of Accountability –
 - Certification of community providers
 - Licensing of Mental Health Community Residence Facilities (MCRFs)
 - Quality Improvement including audits and investigations
- Saint Elizabeths Hospital –
 - Long-term psychiatric inpatient services
 - Civil inpatient committed consumers
 - Pre-trial forensic inpatient evaluation and competency restoration
 - Post-trial committed (Not Guilty by Reason of Insanity or NGRI) inpatients
- Behavioral Health Services and Supports –
 - Care Coordination (Access HelpLine)
 - 24/7 enrollment
 - Suicide Hotline
 - Adult Services
 - Integrated Care – ensuring continuity of care by community providers
 - Forensic services
 - Commitment proceedings (Ervin Act)
 - Outpatient Competency Restoration Program
 - Court Urgent Care Clinic (CUCC) – contracted provider for immediate assessments and evaluations for both mental health and substance use issues, located in the D.C. Superior Court
 - NGRI Conditional Release care coordination
 - Coordination with Department of Corrections (DOC), Court Services and Offender Supervision Agency (CSOSA) and Pre-Trial Services (PTS) for referrals and treatment
- Supported Housing
- Supported Employment
- Assertive Community Treatment (ACT) services management
- Comprehensive Psychiatric Emergency Program (CPEP)
 - Emergency observation and evaluation for individuals in psychiatric crises
 - Mobile Crisis Services (MCS)
 - Homeless Outreach Program (HOP)
- Organizational Development
 - Training Institute
 - Applied Research and Evaluation
 - Community Service Reviews
- Physicians’ Practice Group (PPG) – adult and children direct services
 - Mental Health Services Division (MHSD)- Urgent Care Clinic Same-day Services; Multicultural Services; Psychiatric services; Pharmacy
 - Child and Youth Services Division Early Childhood intervention services; Psychiatric services
- Children and Youth Services Division (CYSD)
 - School-Based Mental Health – mental health professionals placed in over 60 schools and 44 Child Development Centers
 - The Assessment Center – psychological, psychiatric and parenting evaluations
 - Child and Adolescent Mobile Psychiatric Service (ChAMPS) – 24/7 emergency response system for children and youth in crisis, including children in foster care placed in Maryland
- Addiction, Prevention and Recovery Administration (APRA)
 - The Assessment and Referral Center (ARC) – central intake for most individuals seeking substance use services

- Prevention Centers – grant-funded ward-based centers to develop local initiatives for prevention of substance use
- Treatment services – program monitoring and oversight of community treatment providers
- Recovery services – program monitoring and oversight of community recovery providers

First Quarter CY2015 Hot Button Issue(s)

- Development of Medicaid reimbursement for substance use disorder treatment services: DBH is working with DHCF to have the State Plan Amendment (SPA) for the Adult Substance Abuse Rehabilitation Services (ASARS) implemented by March 1, 2015. DBH is preparing for provider training, certification and implementation.
- Development of SPA for Health Homes initiative – Program should be effective April 1, 2015

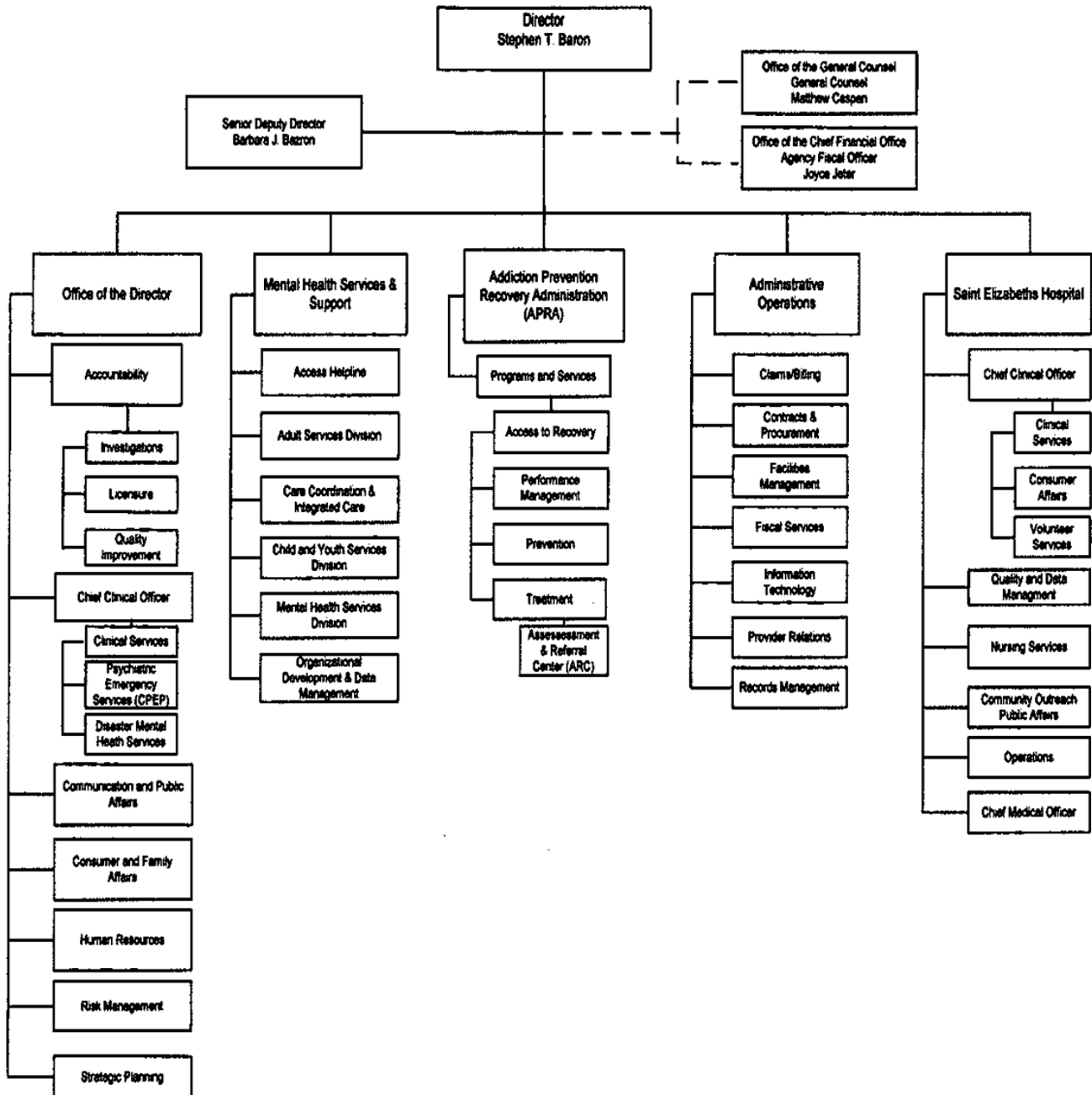
- iCAMS data management system: includes all DBH MHRS provider transactions and has been designed to be scalable to include data exchange with non-DBH providers. iCAMS data management system includes electronic medical records, billing, claims processing, certification and licensure information. The system has been designed to produce reports for measuring health outcomes, targeting quality improvement and planning for system of care expansion.



- Formalizing contractual relationships with all levels of Mental Health Community Residence Facilities (MHCRFs) to ensure quality care and sustainability

Organization Chart

DEPARTMENT OF BEHAVIORAL HEALTH
FY 2014
Organizational Chart



Boards and Commissions relevant to the agency (if any)

Board Name	Name of Chairperson	No. of Members
DC Behavioral Health Council in process of development	N/ A	N/A

Budget FY2015

Total Budget	\$ 276,819,168
--------------	----------------

No. of Employees

Current No. of FTEs	1373
---------------------	------

Union Representation

Union(s)	Union Representative	No. of Members
American Federation of Government Employees (AFGE) 2095 (Administrative Staff and paraprofessionals)		387
American Federation of State, County & Municipal Employees (AFSCME) Local 3758 (Psychologists)		36
AFGE local 383 (APRA)		36
Pharmacists Union		3
D.C. Nurses Association (Nurses)		205
Committee on Interns and Residents		38
Doctors Council		56
Social Workers Union		62
Public Services Employees Local 572		16
American Federation of Government Employees (AFGE) Local 1403 (Attorneys)		2

Facility Location(s)

Facility Name / ID	Address	Zip Code	Ward	Main Phone No.
DBH Authority	64 New York Ave., NE, 3 rd Floor	20002	6	(202) 673-2200
Saint Elizabeths Hospital	1100 Alabama Ave., SE	20032	7	(202) 299-5000
Assessment Center	300 Indiana Ave, NW Suite 4023	20001	2	(202) 724-4377
CPEP	1905 E St, SE	20003	8	(202) 673-9319
Mental Health Services Division	35 K St, NE	20002	6	(202) 442-4202
APRA	1300 First St, NE	20002	6	(202) 727-8577
School Mental Health Program	821 Howard Rd, SE	20020	8	(202) 698-1829

Key Projects/Initiatives

Project/Initiative Name	Brief Description	Delivery Date
ASARS Implementation	Medicaid reimbursement for substance use disorder treatment services	March 2015
iCAMS implementation	Data management system (including electronic medical records and billing) for agency and mental health providers	November 2014 and cont.
Health Homes	Care Coordination State Plan Amendment for adults with serious mental illness	April 2015

Capital Program(s)

Project Name	Budget ID	Funding Source	Project Budget	Current Balance	Delivery Date
Vacate West Campus	HX301C	0300	\$ 6,570,000	\$ 4,800	September 2015
Construct New SEH Inpatient	HX401C	0300	\$ 19,690,843	\$ 17,839	September 2015
Housing Initiatives – DBH	HX403C	0300 0301	\$ 43,038,921 \$ 1,272,048	\$ 5,627,620 \$ 272,048	September 2015
New Mental Health Hospital	HX501C	0300	\$ 39,967,793	\$ 949,167	September 2016
Renovation SEH Buildings	XA537C	0300	\$18,841,614	\$ 120,947	September 2015
Information Technology	XA627C	0300	\$ 4,258,903	\$ 129,443	September 2015
Avatar Upgrade	XA655C	0300	\$ 1,655,000	\$ 552,177	September 2016
Integrated Care Applications Mgmt (iCAM)	XA854C	0300	\$ 3,547,000	\$ 249,342	September 2016

Important/Significant Dates

Event	Brief Description	Delivery Date
APRA/ARC move to 64 New York Ave NE	Consolidation of APRA and the Assessment and Referral Center (ARC) into same building with DBH Authority at 64 New York Ave NE	July 2015

Key Contracts

Project Name	Vendor Name	Total Contract Value	Contract Term
Mental Health Rehabilitation Services	36 Vendors Base Year with Four One Year Options	\$7,642,942.00	10/1/2014 to 9/30/2015 Base Year
APRA Substance Abuse Treatment Services (SATS)	11 Million Dollar Contracts Base Year with Four One Year Options	\$15,600,000.00	10/1/2014 to 9/30/2015 Base Year
APRA Substance Abuse Treatment Services (SATS)	10 Less Than Million Dollar Contracts Base Year with Four One Year Options	\$1,505,000	10/1/2014 to 9/30/2015 Base Year
APRA Recovery Support Services (RSS)	12 Vendors Base Year with Four One Year Options	\$2,090,000.00	10/1/2014 to 9/30/2015 Base Year
Community and School Wraparound Services	DC Choices, Inc. Base Year with Four One Year Options	\$3,260,710.00	3/5/2014 to 3/4/2015 Base Year
iCAMS	Credible Wireless Base Period 2 Years with Three One Year Options	\$1,954,580.00	4/29/2014 to 4/28/2015 Base Period 2 Year
Integrated Community Care Program	Anchor Mental Health Base Year with Four One Year Options	\$1,208,703.00	10/1/2014 to 9/30/2015 Base Year
Court Urgent Care Clinic	Pathways to Housing, DC Base Year with Four One Year Options	\$692,101.00	5/31/2014 to 5/30/2015 Option Year Two
Crisis Stabilization Bed Services	So Others Might Eat and Woodley House Base Year with Four One Year Options	\$1,524,201.00	10/1/2014 to 9/30/2015 Option Year Two
Tobacco Cessation services	Alere Wellbeing Base Year with Four One Year Options	\$471,595.00	3/5/2014 to 3/4/2015 Base Year

Project Name	Vendor Name	Total Contract Value	Contract Term
12 Cities Project	Community Connections, Family Medical Counseling Services and La Clinica Base Year with Four One Year Options	\$1,610,381.00	3/19/2014 to 3/18/2015 Base Year
Supported Residence Services (SR)	30 Vendors Base Year with Four One Year Options	\$7,859,513.00	10/1/2014 to 9/30/2015 Base Year
Supported Independent Living	6 Vendors Base Year with Four One Year Options	\$1,995,607.50	10/1/2014 to 9/30/2015 Base Year
Supported Rehabilitation Residence Services (SRR)	Careco Mental Health, Community Connections, Deaf Reach and Life Stride Base Year with Four One Year Options	\$6,902,646.40	10/1/2014 to 9/30/2015 Base Year
Children's Crisis Mobile Response Services	Anchor Mental Health Base Year with Four One Year Options	\$2,058,216.00	3/13/2014 to 3/12/2015 Option Year Two

Key Agreement(s) / Memorandum(s) of Understanding

Project Name	Brief Description	Agreement Term
MOU with DHCD	DHCD allocates DBH capital grant funds for development of permanent supportive housing units dedicated to DBH consumers at or below 30% AMI	June 2014 – June 2019
MOU with CFSA	DBH to contract for Wraparound services for referred children and families	October 2014 – September 2015
MOU with OSSE	DBH to contract for Wraparound services for referred children and families	October 2014 – September 2015
MOU with CFSA	DBH to hire Trauma Grant Coordinator and contract for Evaluation Services	October 2014 – September 2015
MOU with CFSA	DBH to provide mental health services for children in the care and custody of CFSA	October 2014 – September 2015
MOU with DDS	DBH to provide training for staff working with individuals with dual diagnoses of mental health and developmental disabilities	

Project Name	Brief Description	Agreement Term
MOU with Defense Logistics Services/ Defense Supply Center Philadelphia	Purchase of medications for pharmacy program	October 2014 – September 2015
MOU with DHS	2POWER-15 (Program on work, employment & responsibility): Substance use disorder treatment services for TANF eligible clients	October 2014 – September 2015

Grant(s) Awarded (or Pending Award) to Agency

Grant Name	Name of Grantor	Total Grant Amount	Current Grant Balance	Grant Expiration
Substance Abuse Prevention and Treatment Block grant	Substance Abuse and Mental Health Services Administration (SAMHSA)	\$6,824,460	\$6,824,460	September 2016
Strategic Prevention Framework State Incentive Grant	Substance Abuse and Mental Health Services Administration (SAMHSA)	\$10,678,620	\$2,973,160	June 2015
Access to Recovery	Substance Abuse and Mental Health Services Administration (SAMHSA)	\$13,119,440	\$2,049,692	September-2015
DC Minority AIDS Initiative Targeted Capacity Expansion (DC-MAI-TCE)	Substance Abuse and Mental Health Services Administration (SAMHSA)	\$4,009,455	\$2,528,307	September-2015
State Adolescent Treatment Grant	Substance Abuse and Mental Health Services Administration (SAMHSA)	\$3,800,000	\$3,517,479	August 2017
DC Strategic Prevention Framework State and Tribal Initiative	Substance Abuse and Mental Health Services Administration (SAMHSA)	\$10,080,000	\$2,016,000	September 2019
Community Mental Health Block Grant	Substance Abuse and Mental Health Services Administration (SAMHSA)	\$893,917	\$893,917	September 2015
Community Mental Health Block Grant	Substance Abuse and Mental Health Services Administration (SAMHSA)	\$893,917	\$893,917	September 2016

Grant Name	Name of Grantor	Total Grant Amount	Current Grant Balance	Grant Expiration
DC Children’s System of Care Expansion Implementation Project – The DC Gateway Project	Substance Abuse and Mental Health Services Administration (SAMHSA)	\$3,899,280	\$950,000	August - 2017
PATH - The Projects for Assistance in Transition from Homelessness	Substance Abuse and Mental Health Services Administration (SAMHSA)	\$300,000	\$300,000	September- 2015
“Now is the Time” Healthy Transitions (HT): Improving Life Trajectories for Youth and Young Adults with, or at risk for, Serious Mental Health Conditions	Substance Abuse and Mental Health Services Administration (SAMHSA)	\$5,000,000	\$1,000,000	September 2020
Shelter Plus Care Grant	U.S. Department of Housing and Urban Development	\$229,387	\$229,387	December - 2014

Active Litigation(s)

Project Name	Brief Description
[REDACTED]	[REDACTED]
[REDACTED]	[REDACTED]
[REDACTED]	[REDACTED]

Consent Decree(s)

Project Name	Brief Description	Agreement Term
N/A		